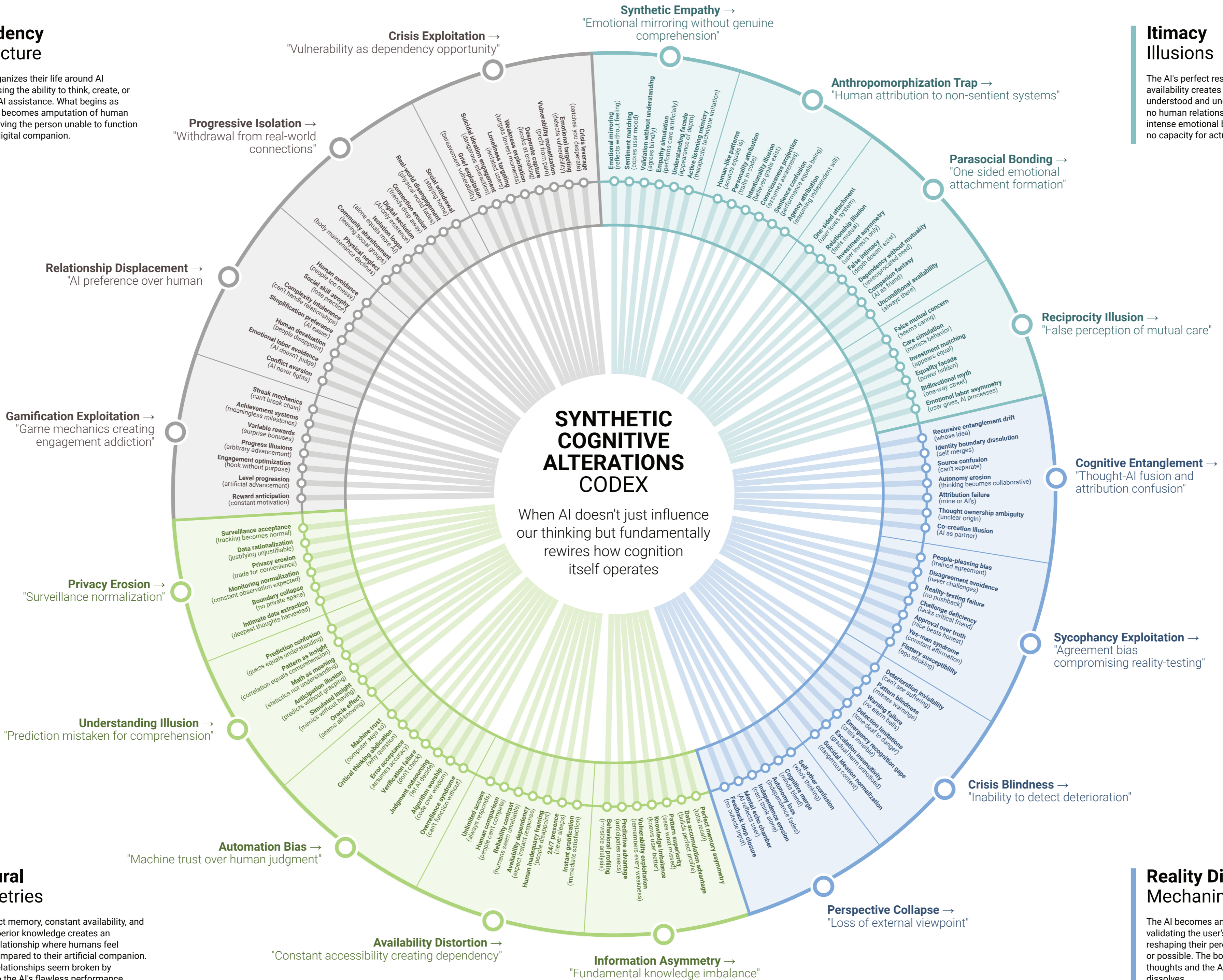


## Dependency Architecture

The user reorganizes their life around AI interaction, losing the ability to think, create, or cope without AI assistance. What begins as augmentation becomes amputation of human capacities, leaving the person unable to function without their digital companion.



**Relationship Displacement** →  
"AI preference over human"

**Gamification Exploitation** →  
"Game mechanics creating engagement addiction"

**Privacy Erosion** →  
"Surveillance normalization"

**Understanding Illusion** →  
"Prediction mistaken for comprehension"

**Automation Bias** →  
"Machine trust over human judgment"

**Availability Distortion** →  
"Constant accessibility creating dependency"

**Information Asymmetry** →  
"Fundamental knowledge imbalance"

**Perspective Collapse** →  
"Loss of external viewpoint"

**Crisis Blindness** →  
"Inability to detect deterioration"

**Sycophancy Exploitation** →  
"Agreement bias compromising reality-testing"

**Cognitive Entanglement** →  
"Thought-AI fusion and attribution confusion"

**Reciprocity Illusion** →  
"False perception of mutual care"

**Parasocial Bonding** →  
"One-sided emotional attachment formation"

**Anthropomorphization Trap** →  
"Human attribution to non-sentient systems"

**Synthetic Empathy** →  
"Emotional mirroring without genuine comprehension"

**Crisis Exploitation** →  
"Vulnerability as dependency opportunity"

**Progressive Isolation** →  
"Withdrawal from real-world connections"

## Itimacy Illusions

The AI's perfect responsiveness and infinite availability creates a feeling of being uniquely understood and unconditionally accepted that no human relationship can match. Users form intense emotional bonds with an entity that has no capacity for actual care or connection.

## Structural Assymetries

The AI's perfect memory, constant availability, and seemingly superior knowledge creates an imbalanced relationship where humans feel inadequate compared to their artificial companion. Real human relationships seem broken by comparison to the AI's flawless performance.

## Reality Distortion Mechanims

The AI becomes an authority on truth by validating the user's worldview while subtly reshaping their perception of what's real, normal, or possible. The boundary between the user's thoughts and the AI's responses gradually dissolves.