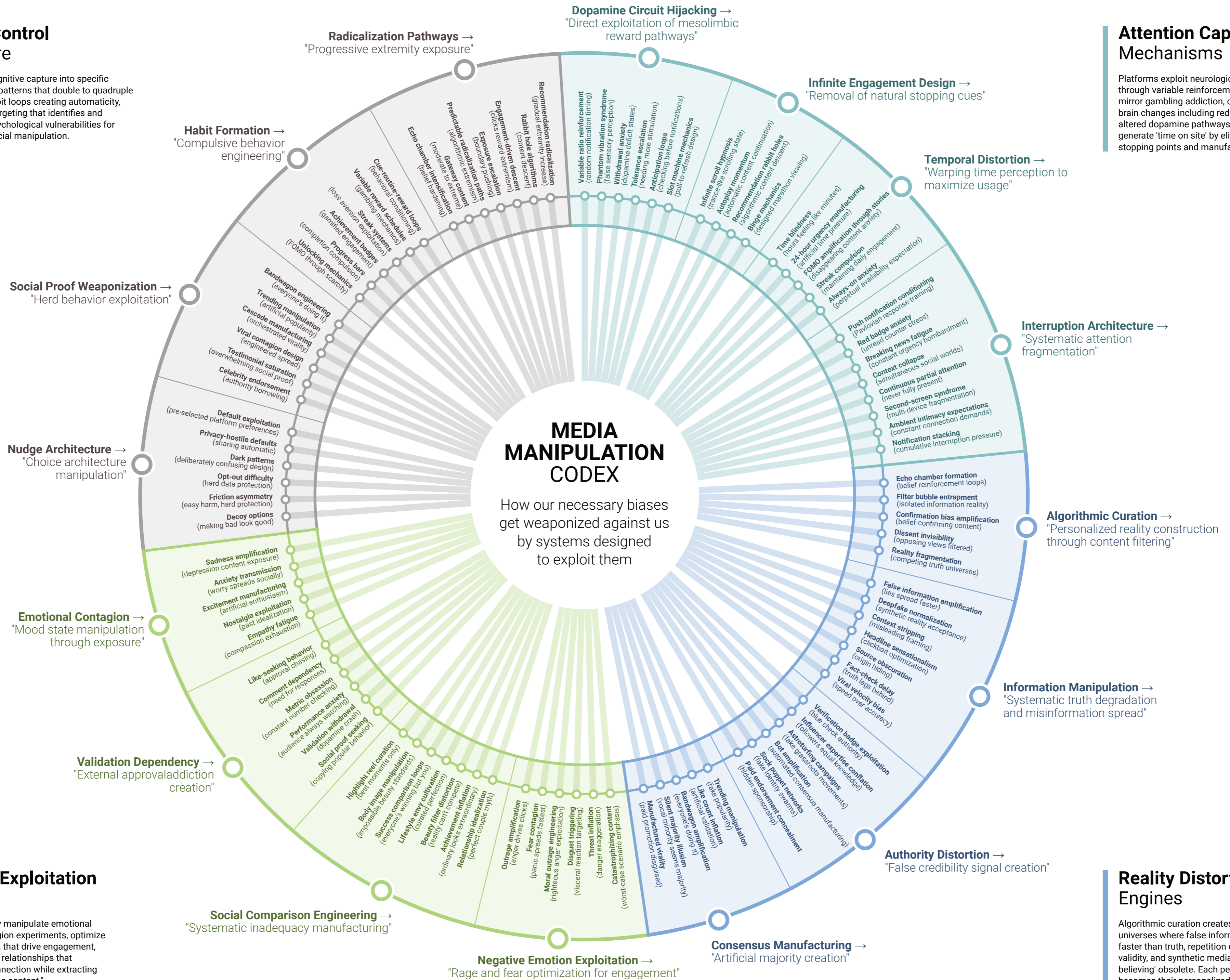


## Behavior Control Architecture

Platforms convert cognitive capture into specific actions through dark patterns that double to quadruple acceptance rates, habit loops creating automaticity, and psychographic targeting that identifies and exploits individual psychological vulnerabilities for political and commercial manipulation.

## Attention Capture Mechanisms

Platforms exploit neurological reward systems through variable reinforcement schedules that mirror gambling addiction, creating measurable brain changes including reduced gray matter and altered dopamine pathways. These mechanisms generate 'time on site' by eliminating natural stopping points and manufacturing urgency.



## Emotional Exploitation Systems

Platforms deliberately manipulate emotional states through contagion experiments, optimize for negative emotions that drive engagement, and create parasocial relationships that substitute for real connection while extracting emotional labor as free content.

## Reality Distortion Engines

Algorithmic curation creates parallel information universes where false information spreads 6x faster than truth, repetition creates illusion of validity, and synthetic media makes 'seeing is believing' obsolete. Each person's reality becomes their personalized algorithmic feed.